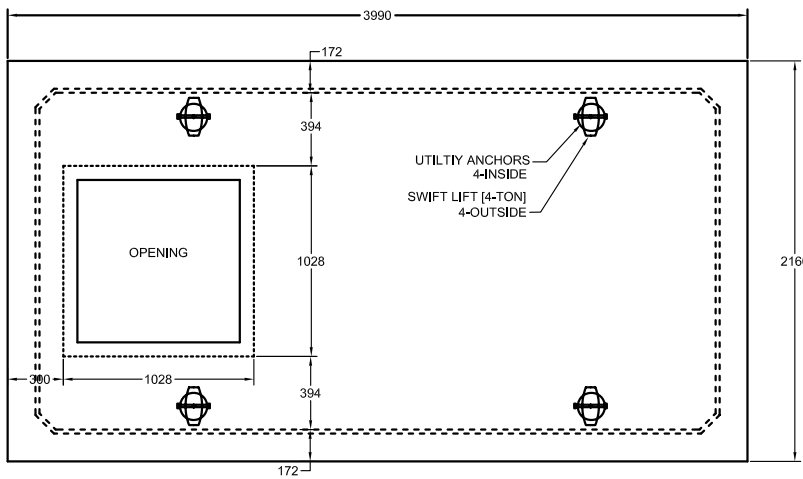


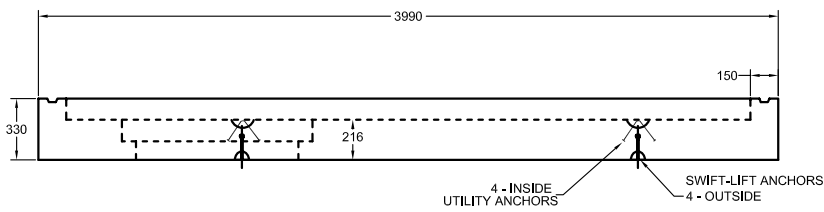
PLAN VIEW



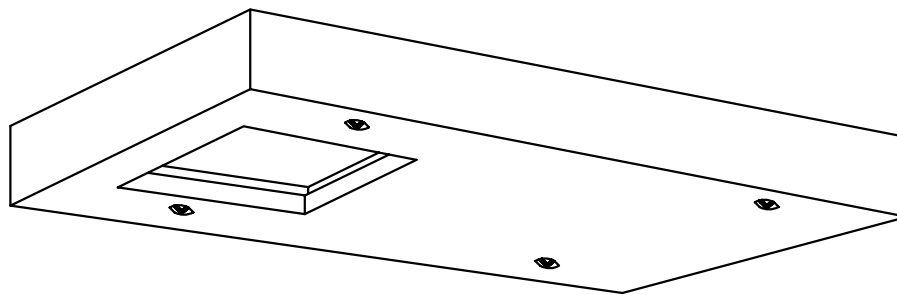
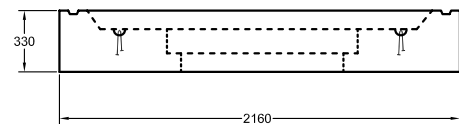
NOTES:

- ▣ Concrete Strength: 30 MPa [min.]
- ▣ Wall Thickness: 150 mm [min.] Air Entrained [5 - 8%]
- ▣ 4 - Utility Anchors Outside for Easy Lifting with Crane Hook
- ▣ 4 - Utility Anchors Inside [Used as Pulling Eyes]
- ▣ 1 - 1028x1028mm Opening at Top
- ▣ Heavily Reinforced with 10M & 15M Bars
- ▣ Total Weight: 4,023kg [8,851 lbs.]

SIDE PROFILE VIEW



END PROFILE VIEW



ISOMETRIC VIEW