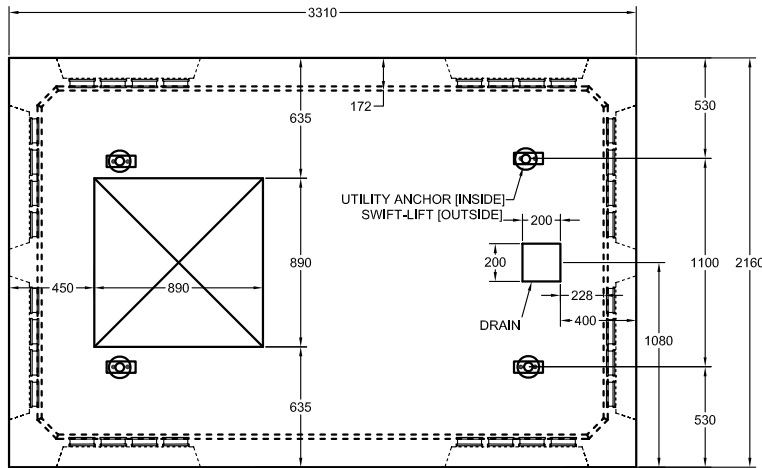


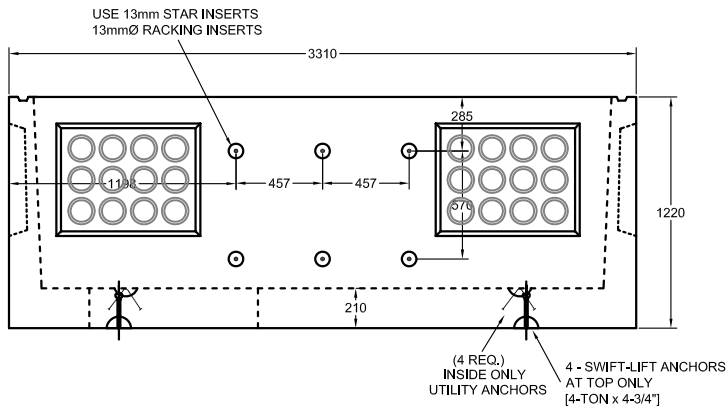
PLAN VIEW



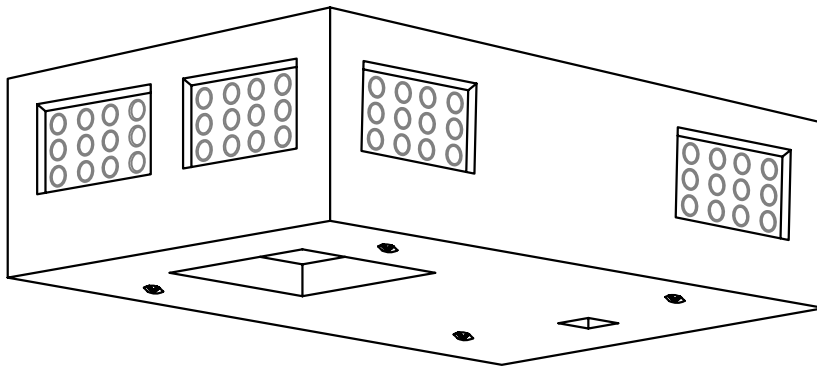
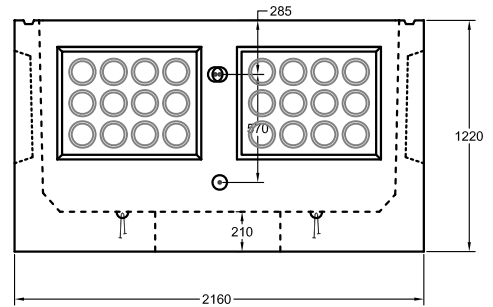
NOTES:

- ▣ 96 - 4"Ø Polylock Pipe Seals
- ▣ Concrete Strength: 30 MPa [min.] Air Entrained [5 - 8%]
- ▣ Wall Thickness: 150 mm [min.]
- ▣ 4 - Utility Anchors Outside for Lifting (no sp. rigging req'd)
- ▣ 4 - Utility Anchors Inside [Used as Pulling Eyes]
- ▣ 1 - 890x890mm Opening at Top
- ▣ Heavily Reinforced with 10M & 15M Bars
- ▣ 16 - 13mm Racking Inserts on Inside Walls
- ▣ Total Weight: 5,943kg [13,074 lbs.]

SIDE PROFILE VIEW

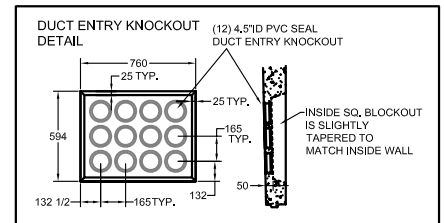


END PROFILE VIEW



ISOMETRIC VIEW

THIS VAULT HAS NO SWITCH GEAR IT IS USED SIMPLY AS A PULLING PIT



FEB. 14, 2008