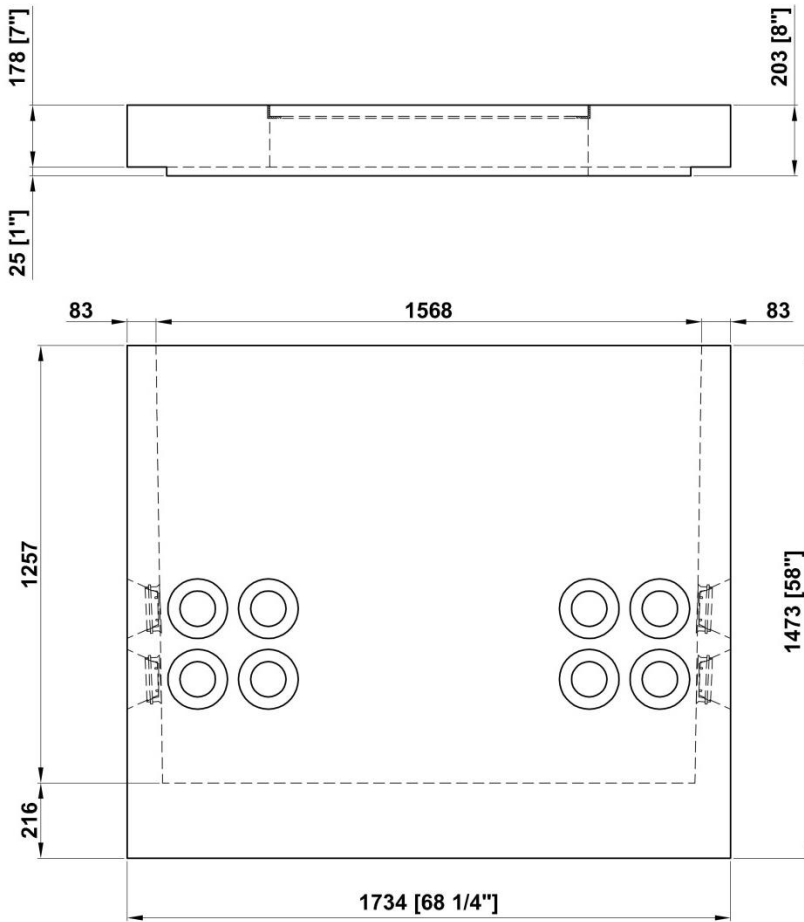
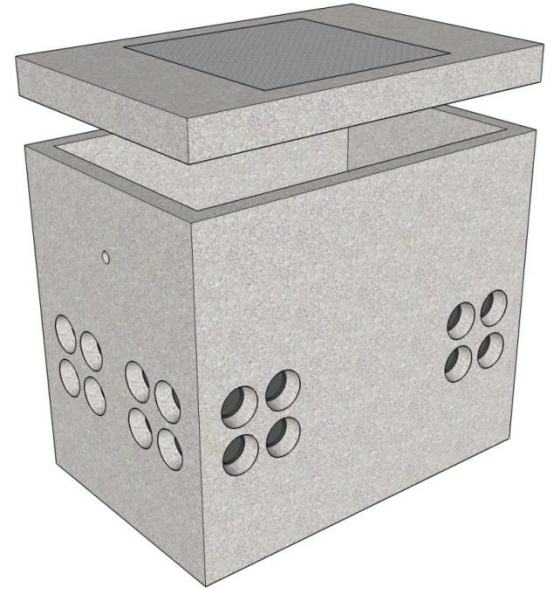


PLAN VIEW



SIDE VIEW

NOTES:

- (32) 140mm PVC Seal Duct Entry Knockouts
- Concrete: 30 MPa [min.] Air Entrained [5 - 8%]
- Wall Thickness: 83mm minimum
- Reinforcement: 10M Rebar & 4x4x4/4 WWF
- 51mmØ Lifting Holes
- Cast-in 332-P ChPI Frame & Cover

VAULT Weight = 2 454 kg (5 410 lbs)

LID Weight = 524 kg (1 155 lbs)