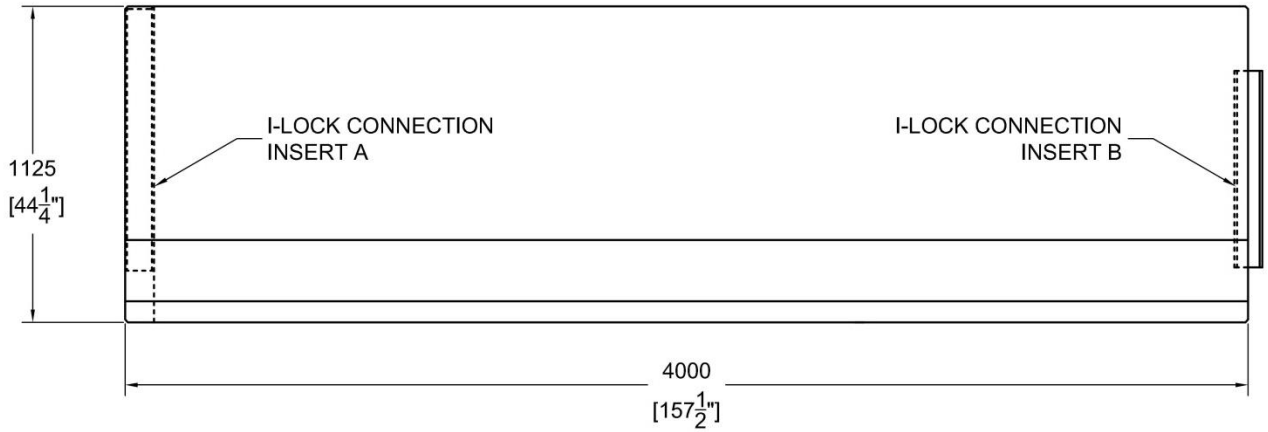
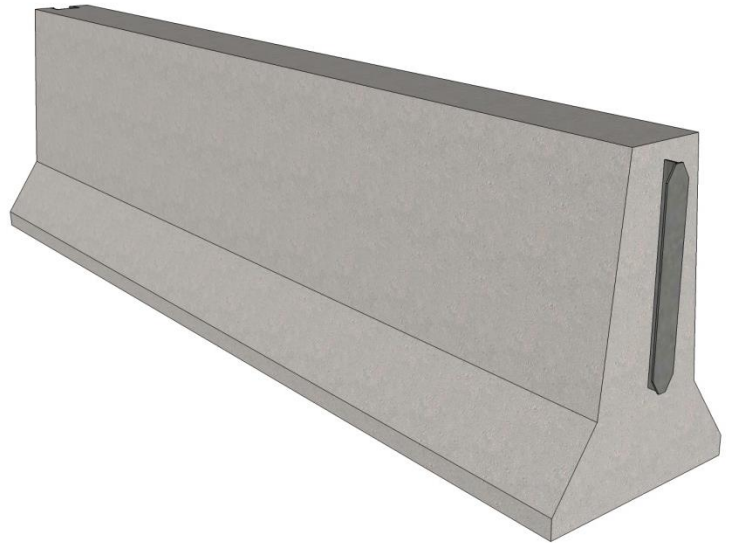
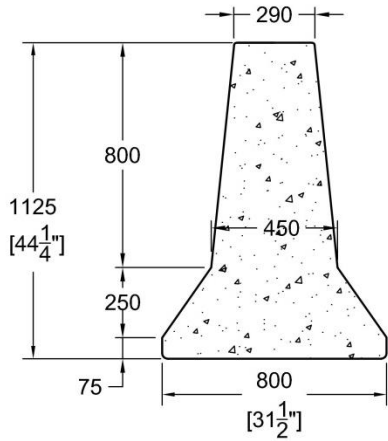


**ELEVATION VIEW**



**SECTION VIEW**



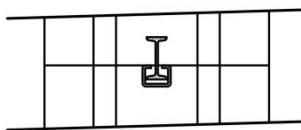
**NOTES:**

- Satisfies OPSS 1352, 1989 (special provision No. 740S03, 2011)
- Satisfies OPSS 911.143

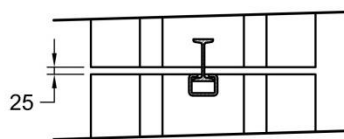
Unit Weight: 4900 kg [10802 lbs.]

**BARRIER-TO-BARRIER CONNECTION**

CLOSED POSITION



MAX. SEPERATION



HORIZONTAL ROTATION

