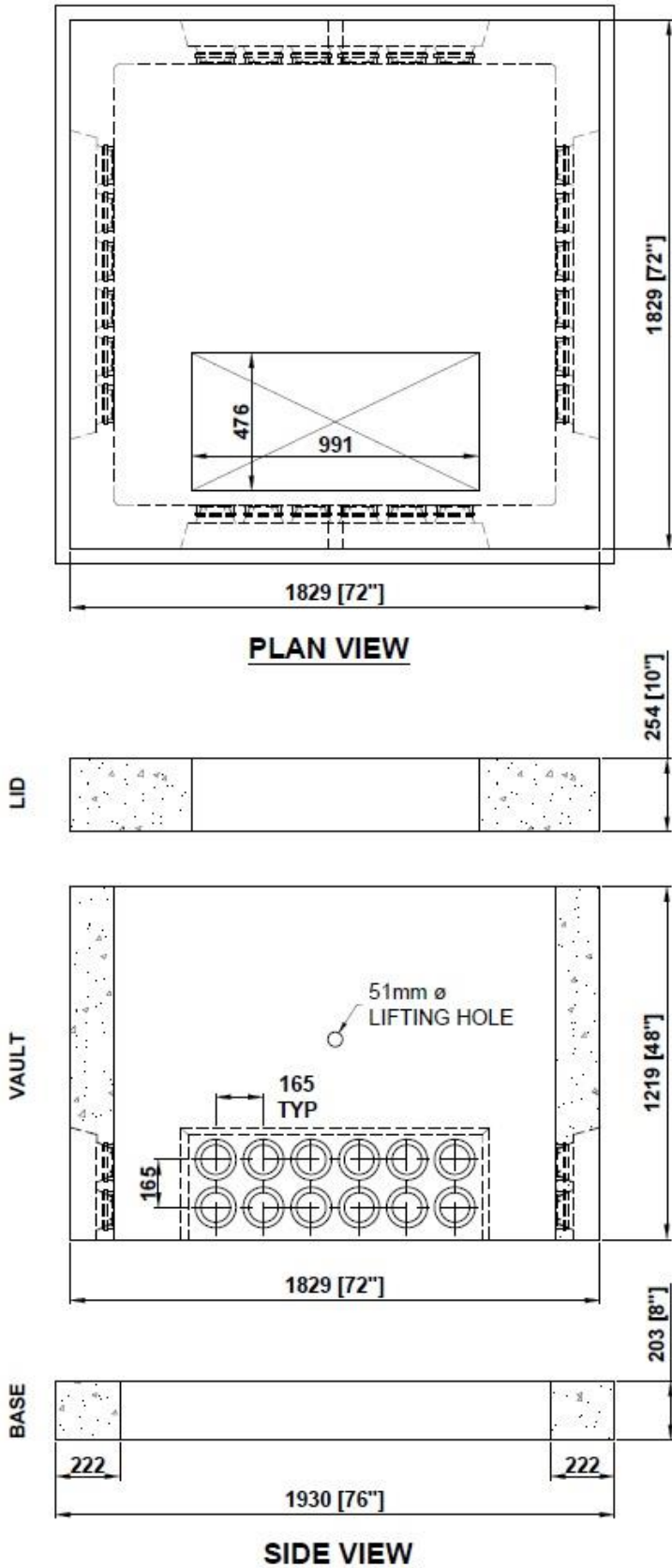
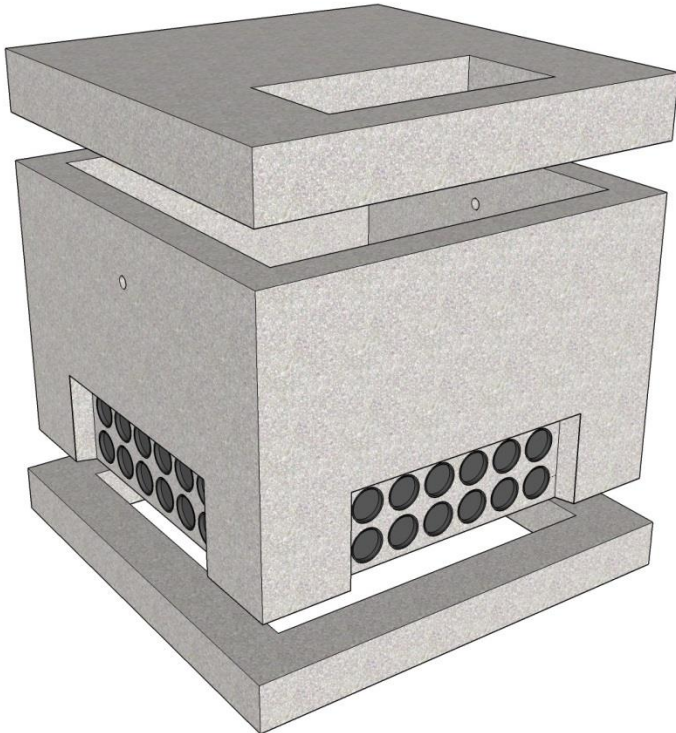


FOR UP TO 2500 KVA
TRANSFORMER



NOTES:

- (4) - Recessed Duct Banks w/ LD-1 PVC Seal Duct Entry Knockouts
- Concrete: 30 MPa [min.] Air Entrained [5 - 8%]
- Reinforcement: 10M Rebar & 4x4x4/4 WWF
- 51mm \varnothing Lifting Holes
- Base Thickness: 203mm [8"]
- Lid Thickness: 254mm [10"]
- Wall Thickness: 152mm [6"]

LID Weight: 1 753 kg [3 865 lbs]
 VAULT Weight: 2 494 kg [5 500 lbs.]
 BASE Weight: 762 kg [1 680 lbs.]

OPTIONAL SOLID BASE AVAILABLE
 Weight: 1 814 kg [4 000 lbs.]